

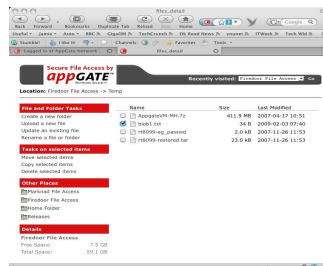
“**Tips & Tricks**” is our regular technical bulletin designed to help you get the most out your AppGate system. This issue looks at how to access files & folders. In the next edition we'll focus on the use of mobile devices. If there are topics that you would like us to cover, send us your comments via the [AppGate Forum](#), or drop us an email to: feedback@appgate.com.

Focus on ... Accessing Files & Folders

With the recent launch of version 9, AppGate introduced a new way to connect users with their files and folders.

The new File Access component makes file access straightforward for users, providing a web view that looks and works like a browser. And with the SSL module, you can use it on mobile devices such as iPhones and Blackberries.

There are a number of other mechanisms in the AppGate Security Server for connecting users to network shares and below we look at three different methods, providing setup tips for Windows, OSX and Linux. At the end we look at the new File Access component which is designed to work on any platform.



Method 1: Using an IP Access component in port forward mode

Network shares are normally accessed using NetBIOS and SMB protocols on port 139 (and 445). It may be possible to mount shares through the security server in this way also. An IP access component needs to be configured using port 139 or 445 (or both) pointing to the file server. This opens up the required connectivity between the client and the server. A client command then has to be used to instruct the client machine to mount the share. The client commands for Windows can be complex and depend on whether it is a domain PC or not. For Mac and Linux it is simpler - have a look at:

http://www.appgate.com/index/support/qa/answer_0024_html

- Windows XP SP1 and earlier: Works out of the box using port 139
- Windows XP SP2/3: Use port 139 and set SmbDeviceEnabled=0 in the registry OR completely deinstall the “File and Printer Sharing for Microsoft Networks” service from the network stack.
- Windows Vista and later: Use port 445 only and completely deinstall the “File and Printer Sharing for Microsoft Networks” service from the network stack.
- Mac OSX Tiger and earlier: Works out of the box using port 139
- Mac OSX Leopard and later: not supported
- Linux: Works out of the box using port 139.

Method 2: Using the Share Access component

The AppGate Security Server has a specific component which was developed for mounting shares on Windows clients. The Share Access component needs to be configured and pointing to the file server. This opens up the required connectivity between the client and the server. The AppGate Client then mounts the share locally. To use this component it is recommended you look at:

http://www.appgate.com/index/support/qa/answer_0020_html

- Windows XP SP1 and earlier: Works out of the box
- Windows XP SP2/3: Set SmbDeviceEnabled=0 in the registry OR completely deinstall the “File and Printer Sharing for Microsoft Networks” service from the network stack.
- Windows Vista and later: not supported
- Mac OSX: not supported
- Linux: not supported.

Bits & Bytes

USB Client v1.5

The new version of the USB client features Ubuntu 9.04, providing a totally closed and secure environment for users to access resources from an insecure device. More information is [on the website](#).

Securing SAP

Implementing ERP solutions such as SAP can result in data security issues and corporate assets vulnerable to attack. AppGate has just published a new paper on securing SAP systems – you can [download it from the website](#).

New Features Coming Soon

The next AppGate release will include some interesting new features such as:

[Chained Authentication](#) – if you want to streamline the process for users to complete multiple authentication steps, for instance Public Key and Password, then this new feature makes it possible with the user entering all the required data in the first dialog; [SSO with Radius](#) - this feature will let you use any password from a Radius exchange for single sign on. Look out for more information soon.

Method 3: Using IP Tunnelling driver

If the IP Tunnelling Driver is installed then the client machine can behave as if it was on the home network. An IP access component needs to be configured using port 139 or 445 (or both) pointing to the file server. This opens up the required connectivity between the client and the server. A client command then has to be used to instruct the client machine to mount the share. This will vary according to circumstances but below are some suggestions which work in different situations:

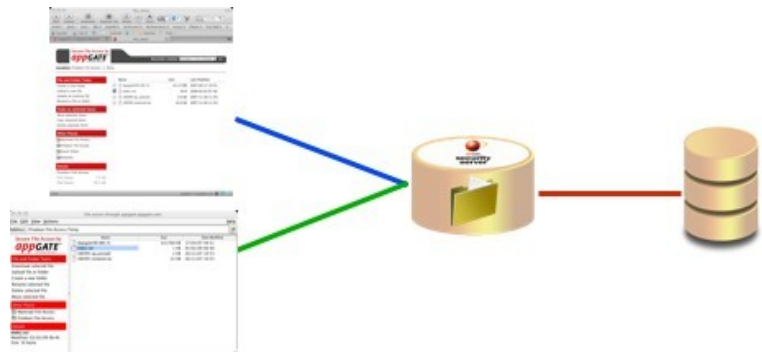
- Windows XP SP1 and earlier: Works out of the box using port 139
- Windows XP SP2/3, Vista and later: Works out of the box using port 445
- Mac OSX: Works out of the box using port 445 or 139
- Linux: Works out of the box using port 445 or 139

If more ports are opened up then it is even possible to run the Windows login script using the AppGate Client and mount multiple shares in the usual way.

File Access component – New in version 9.0

The File Access component works in a different way from the previous 3 methods. Here, the share is mounted on the AppGate Server itself and a view of this share is presented to the user.

The File Access component needs to be configured and pointed to the file server. The AppGate Client then provides a viewer window which looks and works much the same as Windows Explorer. If the SSL module is enabled then users will also be able to benefit from a browser based view of their files and folders. This component works on all versions of the mainstream operating systems.



What are the advantages of the new File Access component over the traditional share mount mechanisms?

Speed – the client machine no longer has to download and index the share.

Universality – the 'viewers' are designed to work on any platform so the set-up for Vista is the same as for Leopard or Ubuntu.

Security – the AppGate Server now acts as a true proxy between a Client and the Server making it impossible for any worms to propagate from a dirty Windows client to a Windows file server.

Happy Midsummer!



In Sweden, Midsummer in the middle of June is one of the most important celebrations of the year. So from all of us at AppGate we wish you a very "glad midsommar"!

For more information:
www.appgate.com

+46 31 774 43 50

info@appgate.com